



A Level English Literature

Drama Exam: 2hr 15
30%

Shakespeare: *Hamlet*
Other Drama: *A Streetcar
Named Desire* (T. Williams)

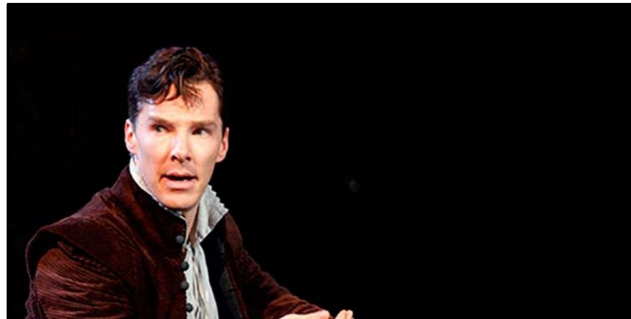
Prose Exam: 1hr 15
20%

The Supernatural: *The Picture
of Dorian Gray* (Oscar Wilde)
and *Beloved* (Toni Morrison)

Poetry Exam: 2hr 15
30%

Post 2000- Poetry: Anthology
Pre- 1900 Poetry: *The Wife of
Bath*, Geoffrey Chaucer

Coursework 20%: *The Great Gatsby* (F Scott Fitzgerald) and *A View from the Bridge* (Arthur Miller)



WHY STUDY?

The study of Literature is a study into the human psyche, human experience and social influences over the years. Any text is the product of its time: a study of it will teach a student to read in context and to understand the influences over the author. The ability to read any content with a deeper appreciation and investigation is an essential skill that will only increase in importance as the platform for sharing news and views grows.

In addition, a study of The Literary Canon will help a student understand History, identify and understand trends and the key events that have shaped our past and present society.

English Literature is one of the Russell Group universities' 'facilitating' subjects — so called because choosing them at A-level allows a wide range of options for degree study.

CAREERS

It is widely recognised by universities that the skills developed through the study of English Literature are among the most transferable, with English graduates going on to develop the widest range of careers — among the most popular are publishing, broadcasting, marketing and PR, journalism, law, teaching and politics.

GREAT NEWS

We follow the EDEXCEL specification – the only exam board that allows you to take copies of the text into the exam – so no more quotation learning!